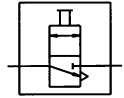
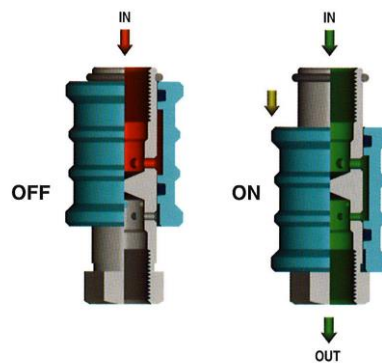


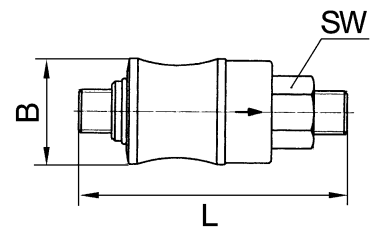
For use on devices that have to be vented whenever they are turned off, either because of safety regulations or for technical reasons. The pneumatic devices are disconnected from the system and simultaneously vented each time they are shut off.



Sliding the sleeve on the rod, both ON and OFF positions can be achieved. When the sleeve is against the rod hexagon, the flow goes in the arrow direction (ON); pushing it backwards the air supply is cut off and the installation is vented (OFF).



Operating pressure max.	10 bar
Operating temperature	0 °C to 70 °C
Body	Chrome plated brass acc. to UNI EN 12164 CW614N
Sleeve	Anodised aluminium
O-ring	NBR



Manual slide valve

Art. No.	Type No.	Thread	a/f	B mm	L mm	Weight g
103759	3214.71	G 1/8 ET	14	21.0	67.0	48.0
103760	3214.72	G 1/4 ET	17	24.0	77.0	82.0
103761	3214.73	G 3/8 ET	22	31.0	87.0	150.0
103762	3214.74	G 1/2 ET	26	35.0	104.0	224.0
117404	215.71*	G 1/8 IT	14	21.0	46.0	40.0
117405	215.72*	G 1/4 IT	17	24.0	51.5	57.0
117406	215.73*	G 3/8 IT	22	31.0	59.0	117.0
117407	215.74*	G 1/2 IT	26	35.0	72.5	172.0



3214.72



215.72*